

OVERVIEW ASSESSMENT

CHARTS

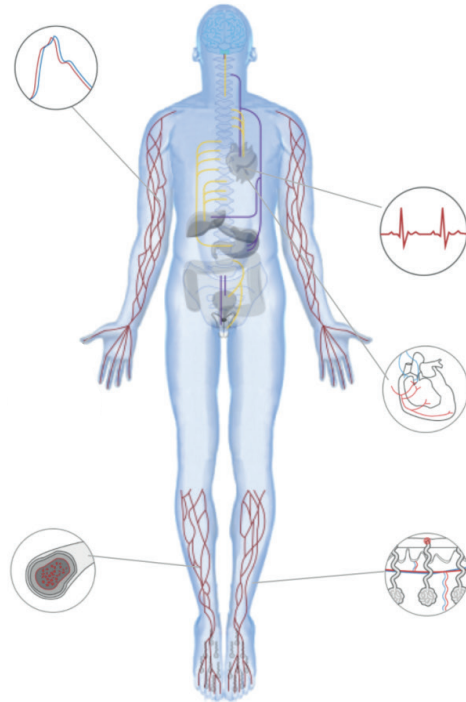
VASCULAR ASSESSMENT

BLOOD PRESSURE
ANALYSIS

NORMAL RANGE

ENDOTHELIAL
FUNCTION

DEFINITE



ANKLE BRACHIAL INDEX ASSESSMENT

LOWER EXTREMITY
ARTERY

NC MILD BLOCKGE

COMPONENT COLOR USE

■ NORMAL RANGE	■ BORDERLINE
■ INITIAL / ACCEPTABLE	■ SEVERE
■ DEFINED / MODERATE	

LIFESTYLE ASSESSMENT

FAT LEVEL

OBESE TYPE 3

VITAL SIGN

NORMAL RANGE

EXERCISE

BORDERLINE

AUTONOMIC ASSESSMENT

CARDIAC
AUTONOMIC

INITIAL STEP 1

SUDOMOTOR FUNCTION ASSESSMENT

VASODILATORY
RESPONSE

NORMAL RANGE

SWEAR RESPONSE

DEFINITE



LD Technology
MAKING A DIFFERENCE

FOR MORE INFORMATION ABOUT THE TM-FLOW SYSTEM,
PLEASE CONTACT YOUR SALES REPRESENTATIVE.

Authorized Distributor

www.ldteck.com



LD Technology
MAKING A DIFFERENCE

TM-FLOW SYSTEM

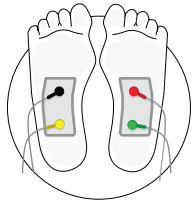
TM-Flow System is a non invasive medical device
to test and monitor the autonomic nervous system
and vascular function.



WHAT IS TM-FLOW ?

TM-FLOW IS A MEDICAL DEVICE DATA SYSTEM INTEGRATING 3 TECHNOLOGIES

1



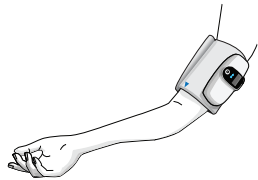
GALVANIC SKIN RESPONSE

2

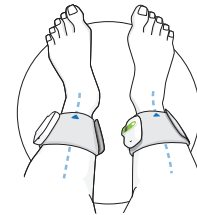


PHOTOPLETHYSMOGRAPHY

3



ANKLE BRACHIAL INDICES AND VOLUME PLETHYSMOGRAPHY



CLEAR REPORT



NO HUMAN ERROR



SIMULTANEOUS MEASUREMENT
(2 MINS)



ACCURATE RESULTS

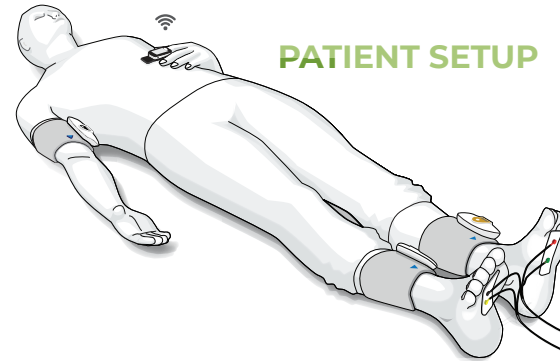
WHY TM-FLOW ?

Artery and autonomic nerve dysfunction or damage are the most frequent complications of diabetes, kidney disease, hepatitis, hypothyroidism and aging.

Although the symptoms may imitate each other, it is imperative to distinguish between autonomic neuropathy and artery disease because the treatments are quite different.

TM-FLOW SYSTEM allows physicians a better chronic care management and to distinguish between

PATIENT SETUP



**CHRONIC CARE MANAGEMENT AND DISTINGUISH
THE CAUSES OF THE SYMPTOMS**

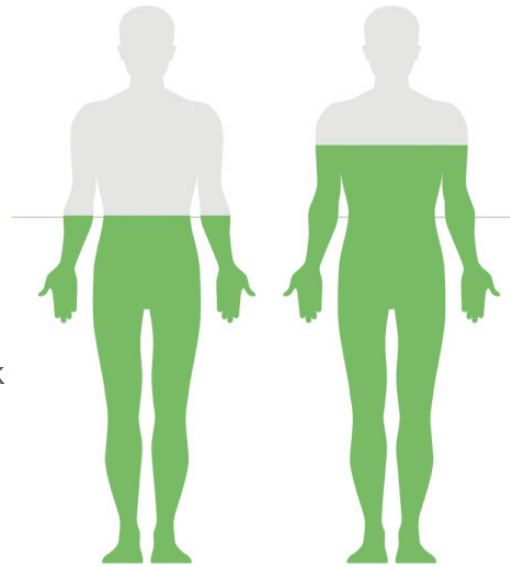
WHO SHOULD BE TESTED ?

50+

Population over 50 years old with cardiovascular risk factor.

70+

Everyone older than 70.



HYPERTENSIVE



OVERWEIGHT



SMOKER



DIABETIC

**EVERYONE IN THE RISK GROUP SHOULD BE
MEASURED WITH TM-FLOW SYSTEM**